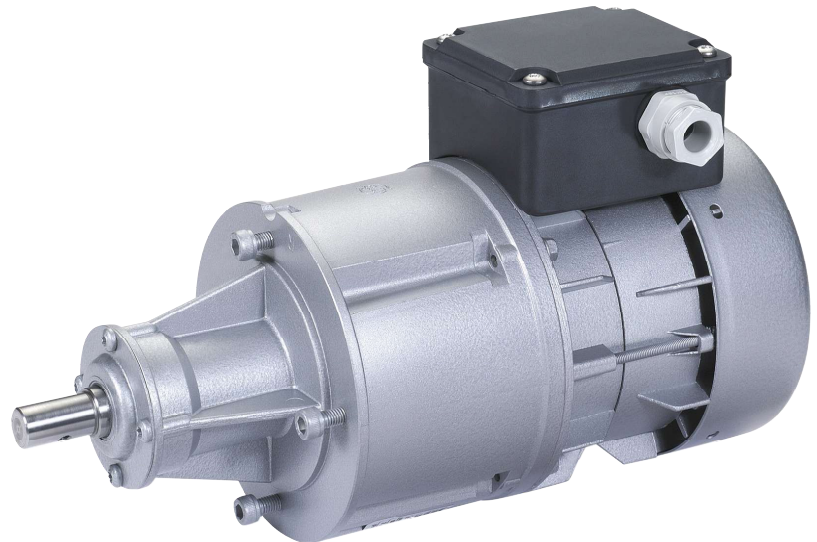




**SPECIFICALLY DESIGNED FOR MILK AGITATION**  
**EXCELLENT RESISTANCE TO THE AGITATOR'S SWINGING**  
**OUTPUT SHAFT ACCORDING TO THE SPECIFICATIONS OF YOUR AGITATION BLADE**

### TECHNICAL FEATURES :

- 2 mountings available : see drawing
- 2 pole motor
- Class B insulation
- IP44 protection
- Single phase with capacitor or three phase
- Permanently lubricated
- 2 directions of rotation
- Thermal cut-out
- Terminal box : 4 positions



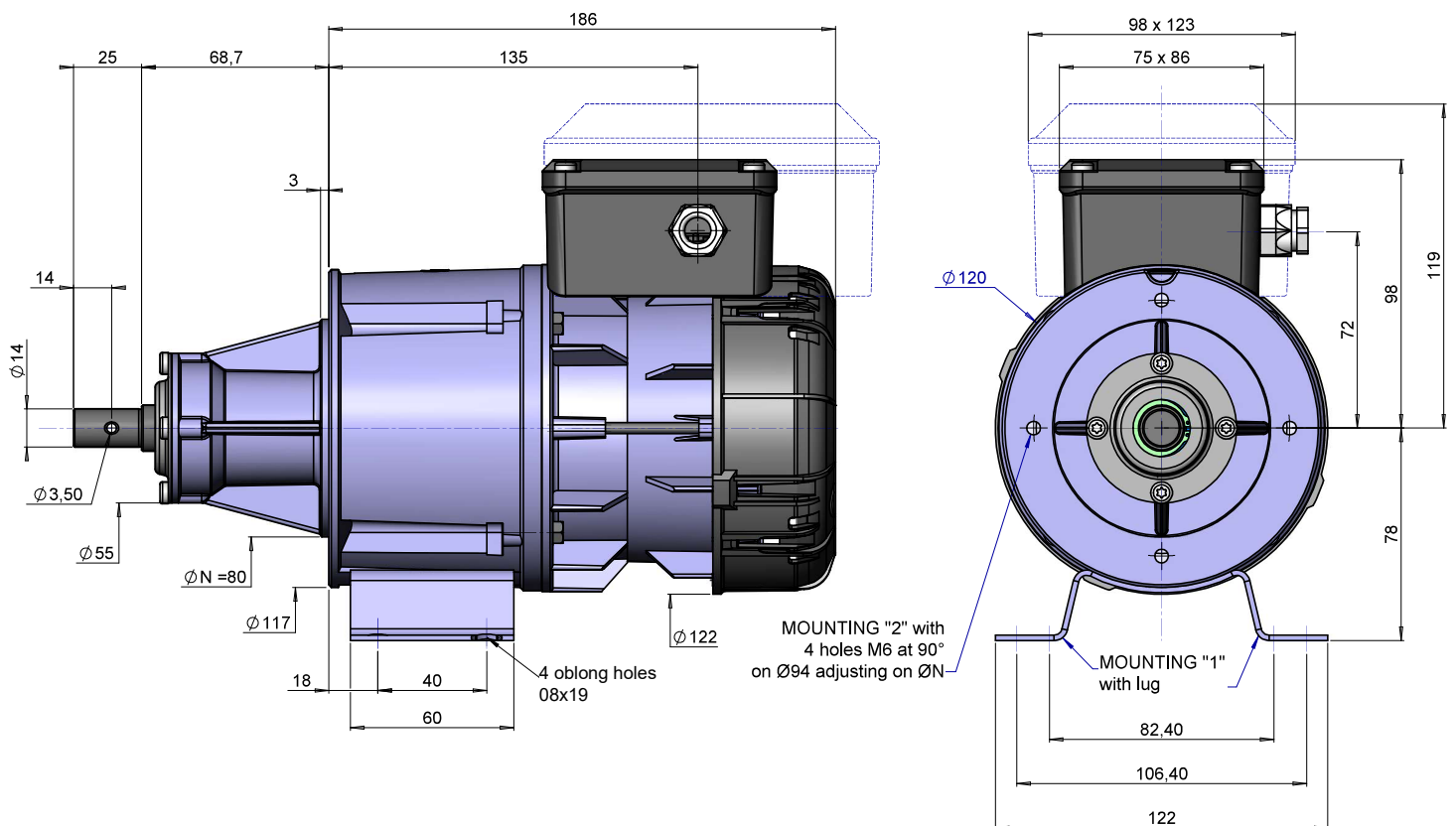
Technical features	Speed N2	Reduction ratio	Nominal torque	Maximum load on slow shaft (1)		Weight Kg
	RPM			N2/N1	m.daN	
R1C225DB	21	1/134	1,2	110	60	3,5
	25	1/108	0,97	100	54	
	30	1/96	0,87	95	50	
	39	1/72	0,66	90	46	
	48	1/59	0,54	84	42	
R3225DB	21	1/134	1,4	110	60	3,5
	25	1/108	1,1	100	54	
	30	1/96	1	95	50	
	39	1/72	0,76	90	46	
	48	1/59	0,62	84	42	

(1) Applied in the middle of the shaft end

Motor features	Single phase with capacitor 230V - 50Hz	Three phase 230/400V 50Hz	Nominal torque cm.N	Output power W	Speed N1 RPM	Current under 230V A	$\frac{I_A}{I_N}$	$\frac{C_d}{C_n}$	Cos
1C 225	•		13,4	38	2700	0,47	1,67	1,41	0,99
3 225		•	15,5	44	2700	0,29	2,45	0,97	0,82

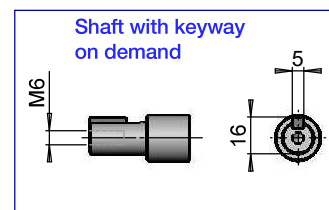


## DIMENSIONS



## OPTIONS

- IP55 protection
- Class F insulation
- Output shaft according to your agitator specifications
- Special voltages and frequencies (60Hz and 50/60Hz)
- Safety circuit breaker (micro-switch incorporated in the terminal box)



### Terminal box positions

